

**A-Assistant**

- 1 • Deck chairs (2) non-tilt chairs, 30" x 30"
- 2 • Serving utensil storage, 61" x 31"
- 3 • Compositing table, 30" dia. wide
- 4 • Intercom (2) bracket supports, 21" x 11"
- 5 • Plastic trash cans (2), 21" diameter
- 6 • Trash canister, 18" dia. x 27"
- 7 • Under-counter base, 20" x 27"
- 8 • Hanging storage, 25" x 27"
- 9 • Small sink, one deep w/ strainer, 16" x 12", 10" shallow w/ faucet, 16" x 12"
- 10 • Hanging storage, 25" x 12"

**B-Baker**

- 11 • Lower cabinet, 4-door, 63" x 12"
- 12 • Under-counter freezer, 3 1/2-door, 66" x 27"
- 13 • Hanging storage, 25" x 27", 10" dia.
- 14 • Food processor, 20", mounted, 11" x 11"
- 15 • Accessory (2) on cabinet floor
- 16 • Cabinet w/ 20" opening, 61" x 27"
- 17 • Lower cabinet, 21" x 27"
- 18 • Microwave, 18" dia. w/ controls, 21" x 21"
- 19 • Sink (one deep), 21" x 21"

- 20 • Sink, self-recleaning, 20" x 27"
- 21 • Dish rack, 20" x 27"
- 22 • Under-counter base, 20" x 27"
- 23 • Steam convection cabinet, 20" x 27"
- 24 • Floor model mixer, 30 quart capacity, 20" x 27"
- 25 • Lower cabinets, 4-door, w/ 20" opening, 63" x 12"
- 26 • Dish rack, 20" x 27"

**C-Cook**

- 27 • (2) Steaming convection ovens, 4-shelf, 30" x 27"
- 28 • Smoke extraction hood, 20" x 27"
- 29 • Control box, w/ motor, 20" x 27"
- 30 • Grease collection pan, 17" x 15"
- 31 • Lower cabinet (front w/ sink), 1-door, 1-door, 20" x 16"
- 32 • Lower cabinet, 1-door, 1-door, 20" x 16"
- 33 • Grill and convection oven, 30" x 27"
- 34 • Control and burner, 30" x 27"
- 35 • Salamander, 30" x 27"
- 36 • Sink, 20" x 27"

**D-Island**

- 37 • Panels, 30" x 27"
- 38 • Smoke extraction hood, 20" x 27"
- 39 • Hanging storage, 25" x 27"
- 40 • Control box, 20" x 27"
- 41 • Lower cabinet w/ sink, 20" x 27"
- 42 • Lower cabinet, 20" x 27"
- 43 • No. 100, 22" x 11"
- 44 • No. 100, 22" x 11"

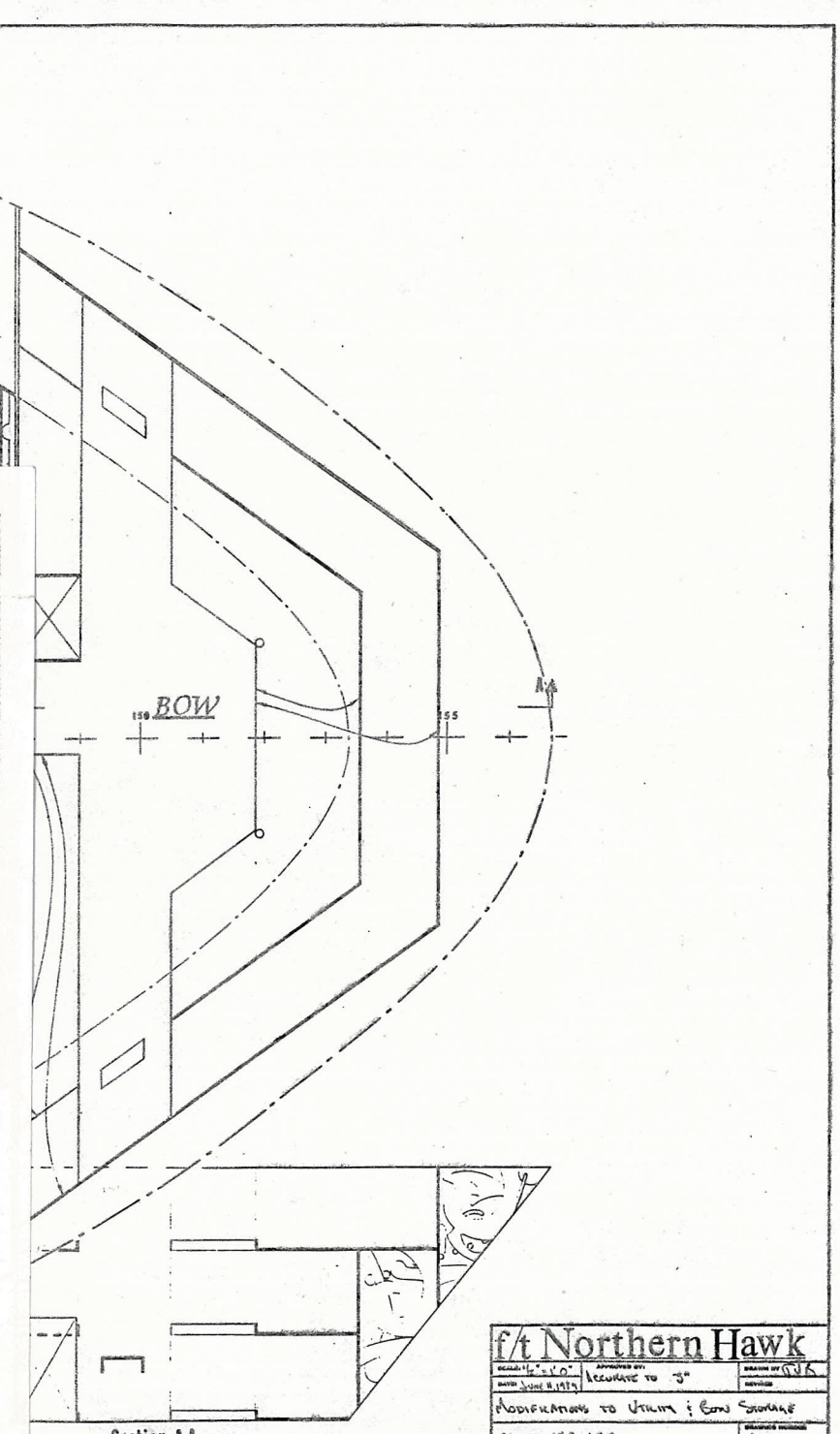
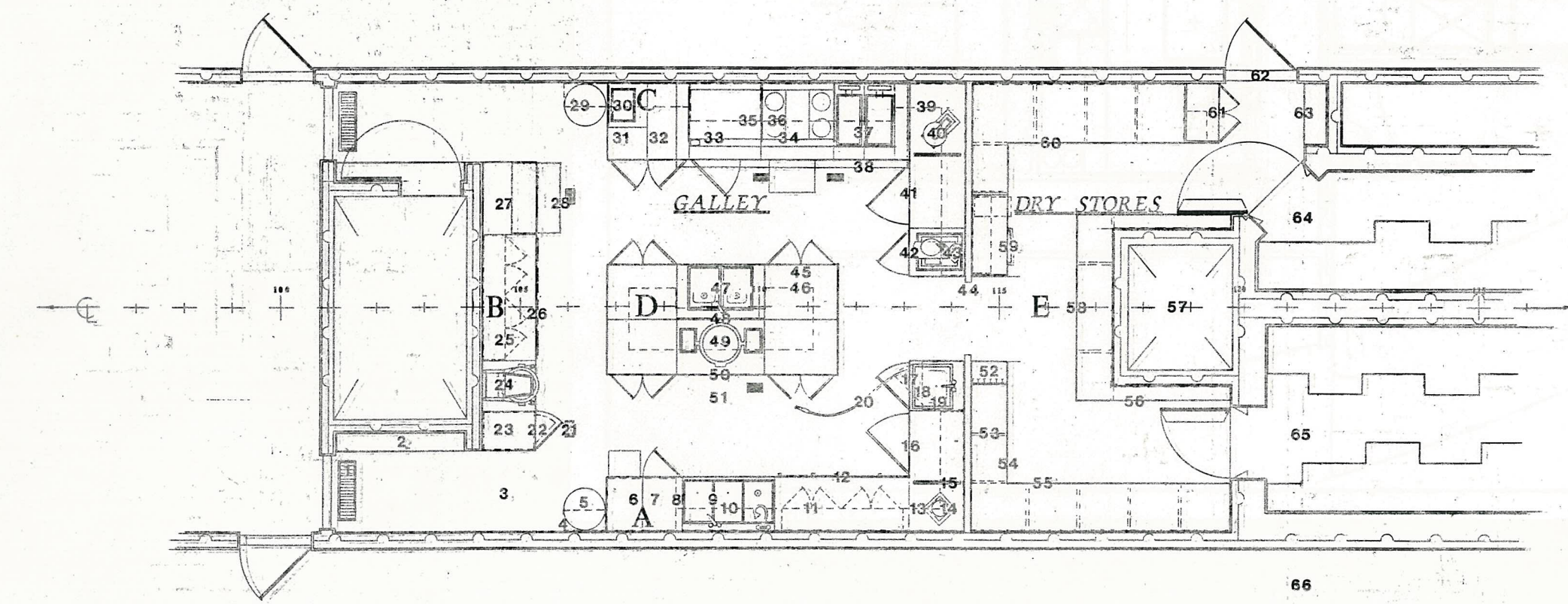
**E-Island**

- 45 • (2) Lower cabinets, 20" x 27"
- 46 • Hanging shelf, 20" x 27"
- 47 • 2-way cook sink w/ 2 burners, 18" x 27"
- 48 • Low cabinet, 6" high, 20" x 27"
- 49 • Tupperware, 30 quart capacity, 21" diameter
- 50 • Ramp deck platform, 18" x 30"

**F-Island**

- 51 • Recess-in-floor, non-tilt, 18" x 30"

Stores and Staterooms Unchanged



Section A-A

f/t Northern Hawk	
Scale: 1/4" = 1'-0"	Accuracy: ± 3"
Drawn: J. B. [unclear]	Checked: [unclear]
Modifications to UTM & Low Storage	
Frame: 129-157	Sheet: 1-0

**F-Storage**

- 52 • Storage effects & cart storage
- 53 • Storage shelving, 24" openings, 18" deep
- 54 • Ramp-deck platforms, 18" x 30"
- 55 • Storage shelving, 24" deep
- 56 • Individual rack storage, 18" x 30"
- 57 • For deck, 18" x 30"
- 58 • Storage shelving, 18" deep
- 59 • Ramp-deck w/ 20" opening, 18" x 30"
- 60 • Deck storage, 18" x 30"
- 61 • Ramp-deck storage, 18" x 30"
- 62 • Deck to 2nd level, 36" wide
- 63 • Recess-in-floor (recess), 18" x 30"
- 64 • Recess-in-floor
- 65 • Recess-in-floor
- 66 • Storage shelving, 18" deep

f/t Northern Hawk	
Scale: 1/4" = 1'-0"	Accuracy: ± 3"
Drawn: J. B. [unclear]	Checked: [unclear]
Modifications to Galley & Storage	
Frame: 96-126	Sheet: 1-8